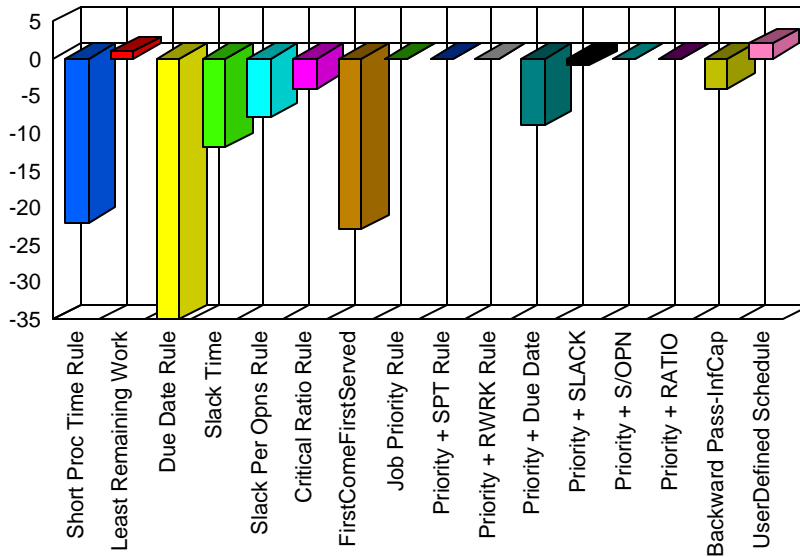




## Schedule Scores - Late Jobs

Average Days Early <Late>



Sched Rule	Description	Sched Gen	Make Span	Late Jobs	Avg Early (days)	Max Late (days)	Cap Util (%)	Percent onTime (%)
1	Short Proc Time Rule	1	398.00	189	-22.00	25.00	2.00	34.00
2	Least Remaining Work	5	237.00	9	1.00	0.00	4.00	96.00
3	Due Date Rule	6	365.00	276	-35.00	37.00	2.00	28.00
4	Slack Time	2	486.00	116	-12.00	19.00	1.00	44.00
5	Slack Per Opns Rule	4	235.00	167	-8.00	18.00	2.00	41.00
6	Critical Ratio Rule	4	234.00	210	-4.00	14.00	3.00	35.00
7	FirstComeFirstServed	5	458.00	132	-23.00	25.00	3.00	26.00
8	Job Priority Rule	0	0.00	0	0.00	0.00	0.00	0.00
9	Priority + SPT Rule	0	0.00	0	0.00	0.00	0.00	0.00
A	Priority + RWRK Rule	0	0.00	0	0.00	0.00	0.00	0.00
B	Priority + Due Date	6	287.00	27	-9.00	11.00	2.00	49.00
C	Priority + SLACK	4	121.00	195	-1.00	17.00	5.00	39.00
D	Priority + S/OPN	0	0.00	0	0.00	0.00	0.00	0.00
E	Priority + RATIO	0	0.00	0	0.00	0.00	0.00	0.00
F	Backward Pass-InfCap	4	339.00	39	-4.00	5.00	1.00	82.00
U	UserDefined Schedule	4	137.00	181	2.00	14.00	5.00	44.00